

SEFAR® PA 1000

SEFAR® PA 1000 (Nitex)

SEFAR® PA 1000 is a polyamide mesh, better known to the rest of the world as nylon. Nylon meshes are the oldest monofilament chemical fiber meshes used for industrial screen printing. The key characteristics of nylon are mechanical resistance, excellent elasticity and very good ink flow. These properties make SEFAR® PA 1000 an excellent choice for applications that involve the use of highly abrasive inks (such as ceramic inks) and applications where the mesh needs to perform and adapt to the shape of the substrate (3D objects).

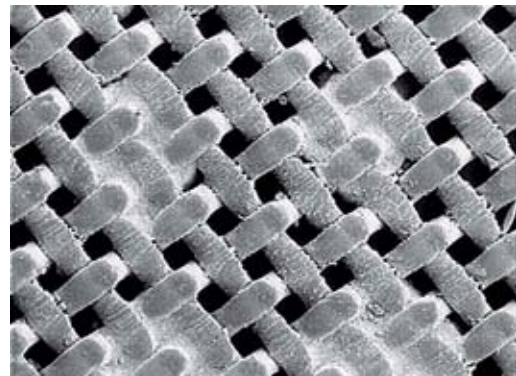


The principal application for SEFAR® PA 1000 is printing solid objects that have 3-D qualities. These applications typically use mesh specifications that are 77 threads per inch and higher, and include products such as bottles, containers and advertising promotional materials. However, SEFAR® PA 1000 is also an excellent option when printing ceramic tiles and decals to be used on ceramic and glass. For any of these applications, the elasticity of SEFAR® PA 1000 is especially high, which enables excellent printing results—even on the most difficult surfaces.

Due to the market demands of SEFAR® PA 1000, the product line is not as broad as SEFAR® PET 1000 or SEFAR® PET 1500. It is available in both white and yellow fabrics (depending on the specification) and 45", 53" and 62" widths.

SEFAR® PA 1000 At-a-Glance

- ◆ Standard polyamide mesh
- ◆ High abrasion resistance
- ◆ High printing performance on 3D objects
- ◆ Very good ink flow properties



SEFAR® Polyamide mesh after 100,000 impressions